

halfords

Bike Trailer

Owner's Manual

Please keep this Owner's Manual for future reference.

PRIOR TO ASSEMBLY

Please read this Owner's Manual completely before assembling or operating this product.

This product should be assembled by an adult.

IMPORTANT SAFETY INFORMATION



WARNING

- Failure to follow these warnings and assembly instructions could result in serious injury or death.
- Immediately discard all plastic bags and plastic wrapping materials!
- Maximum weight capacity for one child is 9kg, and for two children is 18kg!
- Never use this trailer/stroller if it becomes damaged!
- To avoid serious injury, children should always wear the seat belt and the shoulder straps!
- Never leave children unattended in or around this product!
- Never allow children to assemble, fold, or disassemble this unit!
- Accessories or parcels placed in trailer/stroller may cause it to become unstable!
- Not for use with children under 12 months old! Children must be able to support their own heads!
- Before riding, check that all parts are assembled according to the manufacturer instructions!
- Tires should be inflated to 35-40 PSI for maximum comfort! Check tire pressure before each use!
- Use a foot pump or hand pump to inflate tires! Pressurized air hoses can cause overinflation!
- Periodically re-check all fasteners to make sure they are tight!
- Clean trailer only with soap and water. Do not use solvents
- Take care when folding and unfolding to avoid finger entrapment!

SAFE TOWING TIPS

- Make sure your bike brakes work properly! Braking distance is increased when pulling a trailer!
- This trailer is wide! Allow extra clearance near curbs, signs, parked cars, and other obstacles!
- A bicycle with trailer attached requires a wide turning radius! Do not turn sharply!
- Children must wear an approved safety helmet when using this product in trailer mode!
- Never remove protective canopy when pulling children in the trailer!
- Always use the safety flag when pulling this trailer!
- Do not ride over curbs! Avoid bumps and holes! Always signal your turns!
- Use extra caution when turning on uneven pavement, and going downhill!
- Not for use at high speeds! Do not exceed 15 MPH!
- Do not pull this trailer at night!
- Install a rearview mirror on your bike to check on children in trailer!
- Dress children appropriately to prevent them from getting chilled or overheated while riding

halfords

FULLY-ASSEMBLED TRAILER



PARTS LIST

QTY DESCRIPTION

1 Frame w/ canopy, sling seat with 5-point safety harness, tow bar, tow bar coupler, and rear wheel brackets attached.

QTY DESCRIPTION

2 16" rear wheels
1 Safety flag
Assembly Tools included

**Meets EN Norm for Cycle Trailers
EN 15918:2011+A2 2017**

**Certified by Mechanicals and Hardgoods Lab. SGS Taiwan Ltd.
127, Wu Kung Road, Wuku Industrial Zone, Taipei County, Taiwan
TW-24803 – Taipei
Registration number: TAF1053**

halfords

Please read all instructions and examine contents carefully before assembly.

Key Features

- Quick Assembly, take down and storage
- Forward facing seating
- Five-point seating harness with quick lock and release
- Full rain cover with roll-up window
- Quick release wheels with cartridge bearings
- Optional stroller conversion kit (sold separately)
- Also suitable for pets

CAUTION

Please carefully read the instruction manual and all safety warning labels before using the trailer.

IMPORTANT

Passengers and riders should always wear properly fitted, approved cycling helmets. In some countries, helmets are a legal requirement.

WARNING

- **Not for infants under 12 months of age**
- **Children must be able to hold head up with helmets on**
- **Children must always use seat belt and bike helmets**
- **Never leave child unattended**
- **Always ride defensively**
- **Do not exceed 40kg total weight, or 18kg nominal load**
- **Maximum passenger weight 9kg**
- **Maximum passenger height 0.715 m**
- **Do not exceed 25 KM/H (15MPH) maximum speed, slower for turns or rough roads**
- **Braking Distances are increased when pulling the trailer. Slow down and allow extra stopping distance.**
- **Always instruct children NOT to rock, bounce or lean**
- **NEVER use the trailer off-road. This may result in damage to the trailer and or serious injury to the passengers**
- **Do not use the trailer in extreme weather, such as heat, cold, wind or rain. Passengers must be clothed appropriately to prevailing weather conditions.**

halfords

Pre-Ride Safety Check

- 1. Check to insure hitch clamp is tight**
- 2. Check to insure hitch safety strap is secure**
- 3. BUCKLE UP! Check seat harness and secure all baggage**
- 4. Inspect bike and trailer condition before each use**
- 5. HELMETS ON! Insure rider and child helmets are on and secure**
- 6. Check tire air pressure. Always maintain between 35-40 PSI**
- 7. The bicycle to which the trailer will be attached should be inspected by a qualified bicycle mechanic before attaching the trailer to it.**

Safety Guidelines

Think Safety First! Check the working condition of both bicycle and trailer before every use. If you discover broken components, misalignments, or missing parts, correct the problem prior to use.

Please follow these safety guidelines when using your trailer:

- This trailer is intended only for transport of children and cargo in the manner as described in the following pages of the owners' manual. Use of the trailer apart from these guidelines is not recommended, and may result in injury or damage to the trailer or the bicycle.
- Inspect the trailer and its parts before and after each use. Proper maintenance of the trailer is essential to safety.
- When assembling the trailer, make sure that wheels are correctly and securely installed as described in the assembly instructions. If you are not familiar with the type of wheels used on this trailer, contact your place of purchase or a reputable bicycle shop to receive instruction in the correct operation of these devices. Inflate tires to 35-40 PSI and check air pressure before each use. Overinflation may cause the trailer to bounce or turn over. Use only tires with street tread, and not with BMX or Knobby tread.
- Be sure that the bicycle used with the trailer is in good working condition, is appropriate in size and type to pull the cycle trailer, and has good brakes. Refer to the bicycle owners' manual for any advice regarding use of the bicycle with a trailer. A bicycle shop can help you with the inspection to determine if your bike is of the correct type to use with the trailer, and with routine maintenance of the cycle and the trailer.
- Do not overload the trailer. The load limit for cargo and passengers is 22kg. Position the load as low as possible and center it within the trailer, (front to rear, and left to right). Any extra gear should be placed towards the rear. All load should be secured so that it does not shift. **IMPORTANT:** Instruct children riding in the trailer not to bounce, rock or lean. Such movements may cause the trailer to lean or flip.

halfords

- When fully loaded, the Drawbar load measured at the hitch should be between 3-8kgs. This can be verified by lifting the tow bar of the loaded trailer before attaching the trailer to the bicycle. Make sure parking brakes are engaged when loading trailer.
- Do not attempt to install other seating systems in this trailer. It is not designed for car seats, stroller seats, infant beds, or any other type of seating. Use of any seating system other than the original equipment seat will void the warranty, and may result in damage to the trailer or injury to the passenger.
- Never take this trailer off-road. It is intended for use on paved road surfaces. Use in any other conditions may result in damage to the product or injury to the passengers.

Pulling this trailer alters the operation of the bicycle. Stopping, starting, and turning are affected, depending on the weight of the cargo. To familiarize yourself with the changes, load the trailer to capacity and practice in a safe area. Do not use your trailer until you have become accustomed to how it affects your bicycle handling. Further safety strategies include the following:

- Never assume you will be given the right of way.
- Do not try to predict the actions of car drivers.
- Do not travel on highways, busy streets, or in areas unsafe for bicycling.
- Avoid riding at night. If you must ride at night, use lights and bright, reflective clothing. Do not ride at night with children in the trailer. Before use, consult your local authorities to determine appropriate lighting and safety requirements to conform to traffic code.
- To prevent overturning your trailer, do not pull over curbs or holes or hit obstacles in the roadway.
- Do not turn sharply, because trailer may turn over.
- Do not travel at high speeds.
- Do not exceed 15 MPH, slow for turns and rough road conditions. High speeds adversely affect your ability to control the bike and notice road irregularities. Braking distances are increased when pulling a trailer.
- Never take the trailer off road. It is designed for use on paved roadways. Off road use may result in damage to trailer or injury to passengers.

halfords

The safety of your child is of great concern. The trailer seat is intended for passengers older than 12 months and able to wear an approved helmet. Your child must be able to hold their head upright. Check with your pediatrician to make sure your child's development makes him or her a suitable passenger in the trailer. Helmets are recommended for all passengers, and may be required by law. Please check national and local laws regarding trailers and helmet use prior to operation. Make sure that your child is seated securely and the harness is properly engaged. The child's sitting height should be below the upper crossbar, and the correct shoulder strap height must be used. Refer to the instructions to adjust. The four-season cover must be fitted when children are in the trailer. This protects the child from road debris.



halfords

ASSEMBLY AND OPERATING INSTRUCTIONS

STEP 1 - Remove the trailer from the carton and check the contents against the parts list



Fig 1



Fig 1a

WARNING Immediately discard all plastic bags and plastic wrapping materials!

IMPORTANT! Do not remove the white foam from the wheel axles until STEP 4.

STEP 2 - Open Frame



Fig 2



Fig 2a



Fig 2b

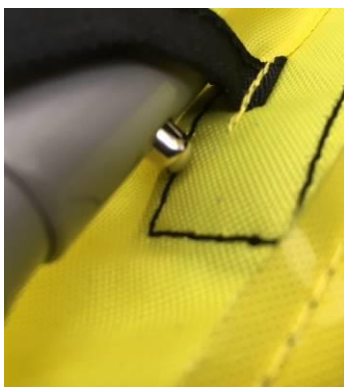


Fig 2c



Fig 3



Fig 4

Remove trailer and all components from carton. Unfold trailer by pulling the frame and remove all components from inside. Note that the window tubes are made in two pieces (marked R and L), and are connected by a spring pin located in the rear half of the window frame tubes. To assemble, slide the fabric sleeve forward to

halfords

access the end of the frame tube. Next, slide the back half of the tube into the end of the frame tube (Fig 2,2a). Depress spring pin (Fig 2b), and push tubes together to allow the spring pin to lock in place. (Fig 2c) **Note: This process only needed for initial assembly. When folding for transport or storage, it is not necessary to disassemble the side frame tubes., IMPORTANT!:** The spring-release pins must be engaged for safe operation of the trailer. Failure to assemble properly may result in frame collapse, resulting in damage to the trailer and injury to the user.. If the spring-release pins do not engage properly, DO NOT USE. Call the customer service number as indicated in the attached literature for assembly assistance.

Once the window tubes are assembled, lift the rear frame tube and align with the plastic locking mechanism at the rear of the window tube. (Fig 3). Slide the end into the block from outside to inside direction until it clicks into place. (Fig 3) Frame is now assembled (Fig 4). The two upper window tubes are not the same.

NOTE: The two upper window tubes are not the same. They are marked R and L, and must be assembled in correct order for the frame to lock. Frame must be properly assembled with quick release connector closed and snapped shut. If QR connector is not fully engaged, frame may collapse, causing damage or injury. Do not use if QR connector is missing components, or if the closure is damaged or missing.

NOTE: For your safety and the safety of your child, before attaching the trailer to your bicycle, it is recommended that your bike undergo a safety check by a qualified bicycle mechanic.

STEP 3 - Release the tow bar



Fig 6



Fig 7



Fig 8

1. Turn the trailer on its side so the hitch arm is along the top edge (Fig6)
2. Find the quick-release pin that holds the tow bar in place in the tow bar bracket (Fig7).
3. Open the loop of the quick-release pin and remove the pin.
4. Rotate the hitch arm forward until it is seated in the U-channel. (Fig8) Re-install pin in front holes in the U-channel and close the snap pin so the loop of the pin lock is over the pin shaft.

STEP 4 - Install the wheels

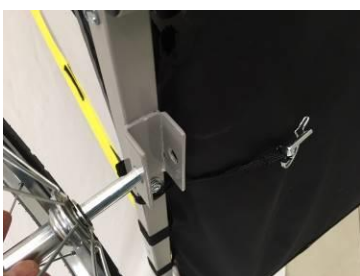


Fig 9



Fig 10



Fig 11

halfords



Fig 12

WARNING Remove the foam from the wheel axles and discard immediately. Do not remove the washers.

1. Lift the trailer back so the right side is up, and locate the right wheel marked with an “R” sticker.
2. Position the wheel with the stub axle next to the hole in the left wheel bracket (Fig9)
3. Slide the stub axle completely through the hole in the bracket so the wheel is in the use position (Fig10).
4. Tip trailer frame to allow access to the underside of trailer. Locate hole in end of hub axle.
5. Slide the quick-release pin (tethered to the bike frame near the wheel bracket) through the hole in the stub . axle and loop the end over the shaft of the pin (Fig11, Fig 12). Repeat for the left wheel

NOTE: Wheels must be properly installed with quick release pins close and snapped shut. If QR pins are not correctly attached, wheels may fall off. Do not use if QR pins are missing, or if the closure is damaged or missing.

halfords

Step 5 – Installing wheel guard/parking brake



Your trailer is equipped with a combination wheel guard and parking brake for added safety. The wheel guard helps to deflect the tire from obstructions that might stop the trailer and result in an accident.

Installing the wheel guard

Parts list

1.	Hex Key	1 ea
2.	Screws	4 ea
3.	Wheel guard	1 set

Installation

1. Unpack polybag and check that all parts are included
2. located the 2 holes in the front of the side frame, just in front of the wheel.
3. Place screws through holes in frame – from inside to outside.
4. Place the Wheel Guard Assembly against the frame, and use the hex key wrench provided to tighten the screws until snug. **Note: The nut is secured inside so you will not need a wrench or plier to hold the nut while tightening the fixing screw.**

halfords



Using the Parking Brake

To activate the parking brakes, simply move the lever from inside to outside of the trailer base to engage the braking function. The brake shoe will contact the tire to lock the wheel. The

WARNING! Always use brakes when loading or unloading trailer, and release brake before riding. Never attempt to ride with brakes engaged.

halfords

STEP 6 - Attaching the Four Season Cover

1. Position the four-season cover over the trailer where roll-up window is facing towards the front side of the trailer. (Fig.12).
2. Wrap the Velcro backed fixing straps and secure the cover around the frame.
3. Secure the Velcro material at the bottom front of the cover to the matching Velcro material on the lower front fabric panel.



Fig 12



Fig 13

NOTE:The four-season cover is designed to keep passengers and cargo dry and warm in inclement weather. It also protects the passengers from flying debris. The four-season cover can be rolled up to allow for added ventilation in hot weather. Elastic closures keep the four-season cover in place when rolled up.



WARNING: Never use the trailer without the four season cover. The front window or bug screen must be attached to protect children from flying objects.

STEP 7 - Install the safety flag

1. Find and assemble the 3-piece safety flag.
2. Locate flag pocket in trailer cabin fabric, and insert flag in pocket as shown (Fig14).
3. Remove flag before attempting to fold Trailer



Step 8 - Attaching Trailer Hitch to Bicycle



Bolt-on Rear Axle

1. For bolt-on rear wheel, loosen left side rear axle to allow the hitch to attach to frame (Fig 15).
2. Position hitch over left rear axle of bicycle frame, replacing axle nut. Tighten securely, with hitch tab facing rear of bike, roughly parallel to the ground.
3. Test to make certain axle nut is secure. Trailer hitch must not be able to rotate by hand.

Quick-Release Axle



1. For Quick-release rear wheel, loosen lever and remove QR skewer. Do not remove wheel.
2. Slide hitch onto skewer, with the angled tab facing out, and reinstall the skewer through the axle, Position with hitch tab facing rear of bike, roughly parallel to the ground.
3. Tighten QR axle and make certain wheel and hitch are secure. Trailer hitch must not be able to rotate by hand. If QR Axle is too tight or too loose, when in closed position, open the lever and tighten or loosen the nut to ensure the axle is tight.

WARNING: Safety requires that Quick release axles be used correctly. If they are not, the wheel can fall out or become loose, causing accident or injury. If you are not familiar with the operation of Quick-release axles, please seek guidance and instruction from a bicycle professional.

halfords

Step 9 - Attaching Trailer to Bicycle

1. Position trailer tow arm to align with trailer hitch on bicycle frame. Slide the tow arm flex coupler onto the trailer hitch, aligning the holes in tow arm with the hole in the hitch.
2. Insert QR pin through tow arm and hitch and close and lock the pin.
3. Thread the safety strap through the lower chainstay of the frame, being careful not to interfere with brakes or other moving components. Clip to D-ring on the tow arm.



WARNING: Safety strap must attach to the bike frame when using this product in trailer mode.

REMOVING TRAILER FROM BICYCLE

1. To remove the trailer from the bicycle, release the safety strap shown above'
2. Remove the QR pin from the tube connecting the hitch arm to the black hitch
3. Pull back on the hitch arm to release trailer from the black hitch, which remains on the bicycle

Note: For convenience, you may purchase additional hitch ends for convenient fitting of the trailer to multiple bicycles. Contact your retailer for details.

halfords

STEP 10 Using the 5-point safety harness



Fig 18

WARNING To avoid serious injury children should always wear the seat belt and shoulder straps!

1. Undo the lap belt buckle, unclip the shoulder straps and crotch strap from D-ring, and seat the child
2. Buckle the lap belt over the child's lap, and pull the straps until the belt is snug.
3. Place the two center shoulder straps over the child's shoulders, and clip both straps into the "D" ring of the center crotch strap.
4. Adjust the shoulder strap height according to the height of the child, then pull the straps until they are snug.

IMPORTANT: Adjust the straps so that the crotch strap and shoulder straps meet at the child's stomach level, not at chest level!

REMOVAL OF PASSENGERS

Before removing children or cargo from the trailer, stop the bicycle and lock the trailer parking brakes on both wheels. Then open the passenger compartment window, release the safety harness and allow the passengers to exit the trailer. Take care the bicycle attached to the trailer does not fall over during loading and unloading.

halfords

Folding for Storage and Transport



Fig 19



Fig 20



Fig 21

1. Remove children and all cargo from inside the passenger compartment.
2. Unclip the tow bar safety strap from the “D” ring, and remove pin to remove hitch from frame.
3. Clip the end of the strap back on to the tow bar “D” ring.
4. Remove the flag and pole and separate the sections.
5. Remove the quick-release pins from the stub axles of the rear wheels.
6. Remove the quick-release pin from the tow bar bracket at the front corner of the trailer.
7. Fold the tow bar back under the trailer, and replace the quick-release pin through the tow bar and U-channel
8. Place wheels and flag inside the passenger compartment, and close the front cover.
9. Fold upper cabin as shown above:
 - a. Remove 4-season Rain cover
 - b. Press red button on QR connector and pull apart - from both sides.
 - b. Fold frame down as shown.
 - c. Fold in until trailer is flat

Maintenance

Before each ride, check the trailer for signs of wear or damage. Inflate tires to correct pressure as stated on tire sidewall, and check for wear and tear before each ride. Use of hand pump recommended to avoid overinflation. Check nuts and bolts for tightness, and make sure QR pins for wheels, frame and hitch are secured. Once a year, it is recommended to have the trailer inspected by a qualified bicycle mechanic. The trailer fabric can be cleaned with mild soap and water, and allowed to air dry. The fabric is not machine washable.

Warranty Service: Please return product to store or contact:

Halfords Customer Services Department,
Halfords Group plc, Washford West,
Redditch,
Worcestershire,
B98 0DE
(+44) 0345 504 53 53
customer.services@halfords.co.uk