

**halfords**

SINCE 1892

## User Instructions

# *Eland R129 Isofix Booster Seat*

Child height: 125-150cm

Approx: 6-12 years\*

**2 YEAR  
GUARANTEE**



Item Code: 289539

\* Age shown is a guideline only

# Contents

1. Introduction .....	2
2. Suitability .....	2
3. Safety advice .....	3
4. Vehicle application .....	4
5. Positioning your booster seat .....	4
6. Components overview .....	5
7. Fitting the car seat .....	5
8. Remove cover .....	10
9. Cleaning the cover .....	10

## 1. Introduction

This is a 125-150cm Non-integral Universal Enhanced Child Restraint System - without backrest (Universal booster cushion).

### WARNING



This is a Universal booster cushion Enhanced Child Restraint System. It is approved according to UN Regulation No.129/03, for use primarily in "i-Size compatible and universal vehicle seating positions" as indicated by vehicle manufacturers in the vehicle user's manual. If in doubt, consult either the Enhanced Child Restraint System manufacturer or the retailer. The product can only be used in a vehicle that is fitted with a 3 point safety belt approved to ECE-16 or the equivalent standard. Never use a 2 point safety belt.

**Important note:** This product will reduce the damage to children caused by traffic accidents, but cannot guarantee the absolute safety of children. Please strictly abide by local traffic laws whilst driving.

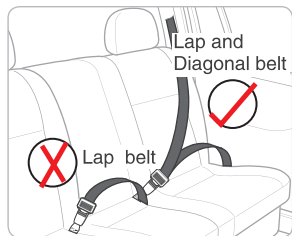
ECE R129/03 compliant.

## 2. Suitability

This child car seat is suitable for children from 125cm to 150cm.

The product can only be used in a vehicle that is fitted with a 3 point safety belt approved to ECE-16 or the equivalent standard. Never use a 2 point safety belt.

The car seat must only be installed by using a lap and diagonal seat belt.



Correct Fitting/ Suitable



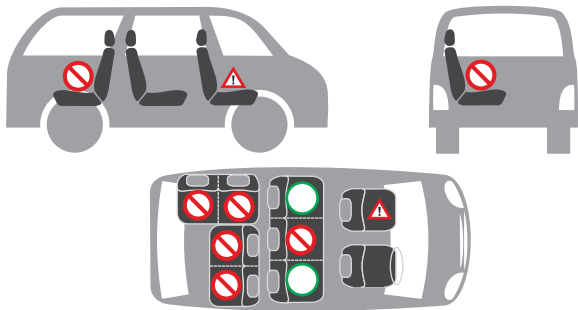
Incorrect Fitting/ Not Suitable


### 3. Safety advice


- 1) Please read the entire instruction manual thoroughly before using the child car seat. Improper installation can endanger the life of your child.
- 2) Under no circumstances should the seat be installed on a front passenger seat equipped with an active air bag. This can be dangerous.
- 3) It is most important that the seat belt is correctly routed.
- 4) Never make unauthorised alterations or additions to the product.
- 5) Do not continue to use the child seat if parts have become damaged or have loosened after an accident.
- 6) It is recommended not to leave children in your child seat when unattended.
- 7) It is recommended that any luggage or other objects liable to cause injuries in the event of a collision shall be properly secured.
- 8) Never use the child car seat without the cover. Only covers approved by manufacturers can be used.
- 9) Do not leave your children in the seat unattended at any time.
- 10) Child car seat parts may become hot in direct sunlight. Cover with a sheet to prevent this.
- 11) Make sure that your child never plays with the car seat belt buckle as the buckle is not fully tamperproof.
- 12) Ensure that all other passengers, luggage and loose objects are properly secured.
- 13) The child car seat must be secured with the car seat belt when not in use.
- 14) In an emergency your child can be released quickly by pressing the red button on the car seat belt buckle.
- 15) Store this child car seat in a safe place when it is not being used. Avoid placing heavy objects on it.
- 16) Most accidents occur on short trips, so do not be tempted to avoid using the seat simply because you are not travelling very far.
- 17) Keep the plastic bag away from your child as it is likely to cause suffocation.
- 18) Do not expose the child car seat to any corrosive substances. Use a wet towel to clean the plastic body instead of any solvents when the plastic body is dirty.
- 19) Make sure the child car seat belt is adjusted to the suitable position and the belt can't be twisted.
- 20) It's very important to put any lap belt low down so that the pelvis is firmly stressed.
- 21) Do not use this product second hand as you never know its history.




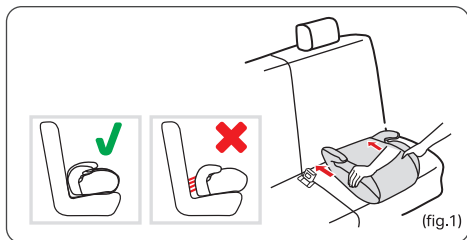
## 4. Vehicle application



 Safe to install child car seat in these positions and any seat position marked "i-Size seating position"

 Do not install a child car seat in these positions.  
Except for the seat positions marked "i-Size seating position"

 Be careful to install in this position.



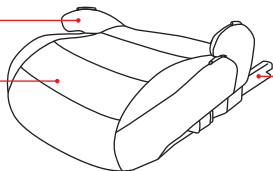
## 5. Positioning your booster seat

- 5.1 Never put the booster seat on the front passenger seat with an active air bag fitted.
- 5.2 Never put the booster seat on a side facing passenger seat.
- 5.3 The booster seat can go on the rear seats of most cars provided they are fitted with a lap and diagonal (3-point) seat belt.
- 5.4 Ensure the booster seat is pressed firmly against the backrest of the car seat.

## 6. Components overview

A - Armrest

B - Plastic body



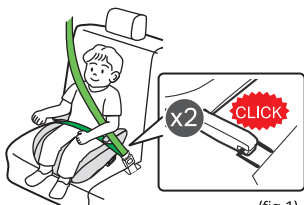
C - ISOFIX connector

## 7. Fitting the car seat (125cm-150cm Universal booster cushion)

There are two ways to install the child car seat as below

- Install child car seat with ISOFIX connector and 3 point safety belt (fig.1)

Car seat direction	Forward facing
Install child car seat using	ISOFIX Connector + 3 point safety belt
Secure child in child car seat using	3 point safety belt



(fig.1)

- Install child car seat with 3 point safety belt (fig.2)

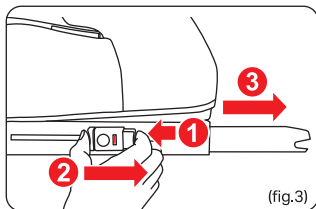
Car seat direction	Forward facing
Install child car seat using	3 point safety belt
Secure child in child car seat using	3 point safety belt



(fig.2)

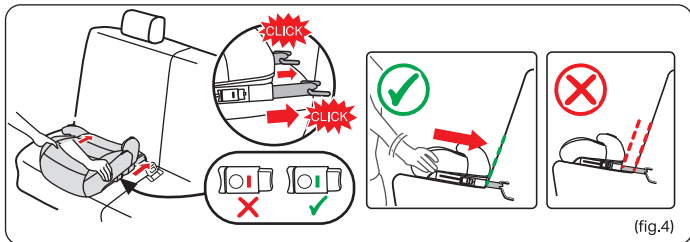
## 7.1 Fitting the car seat (125cm-150cm i-Size Booster) using ISOFIX + vehicle 3-point belt

7.1.1 Using one hand, grasp the ISOFIX release handle and with the other hand, pull out the ISOFIX connecting arm. You will need to do this separately for each ISOFIX securing arm. (fig.3)



Push the ISOFIX connectors directly into the anchorages on both sides until an audible 'click' is heard on both sides. After this the green indicators should be seen.

There are various adjustment positions for the ISOFIX arms, always ensure both sides are set to the same position. Push the child seat back until it contacts the vehicle seat back. If the seat moves or the arms pull from the ISOFIX points, repeat the above steps and install again. (fig.4)

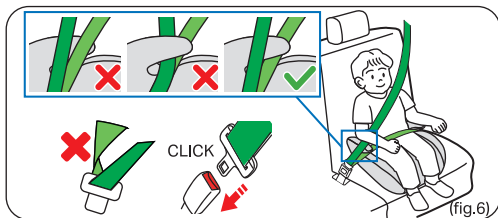


Once the seat is installed and secured using the ISOFIX points, follow the below steps for securing your child in the seat.

7.1.2 Place child on the booster cushion. (fig.5) Ensure the child's back and waist is fully in contact with the backrest of the car seat.



7.1.3 Secure the seatbelt as shown in (fig.6). The diagonal belt must go above the armrest while the lap belt goes under the armrest. Make sure the seatbelt is not twisted.



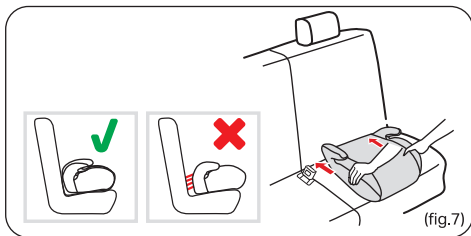
7.1.4 It is important that the seatbelt crosses the middle of the shoulder and is tight across the lap. Ensure that the lap section is worn low down and firmly engaged with the pelvis. The diagonal belt must pass over the child's shoulder and NOT across the neck.

7.1.5 Ensure that the seat belt straps are not twisted. Remove the excess slack from both the lap and diagonal belts by pulling them tight.

7.1.6 Once the seatbelt is guided and located correctly, clip the vehicles seatbelt into the buckle until you hear it click.

## 7.2 Fitting the car seat (125cm-150cm i-Size Booster) using vehicle 3-point belt only

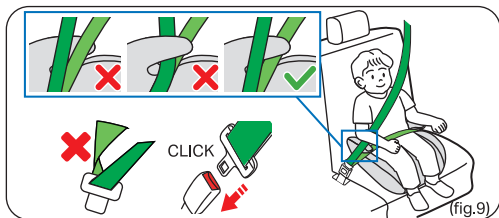
7.2.1 Place the booster cushion on the car seat (fig.7). Ensure the booster cushion is pressed firmly against the backrest of the car seat.



7.2.2 Place child on the booster cushion (fig.8). Ensure the child's back and waist is fully in contact with the backrest of the car seat).



7.2.3 Secure the seatbelt as shown in fig.9. The diagonal belt must go above the armrest while the lap belt goes under the armrest. Make sure the seatbelt is not twisted.



7.2.4 It is important that the seatbelt crosses the middle of the shoulder and is tight across the lap. Ensure that the lap section is worn low down and firmly engaged with the pelvis. The diagonal belt must pass over the child's shoulder and NOT across the neck.

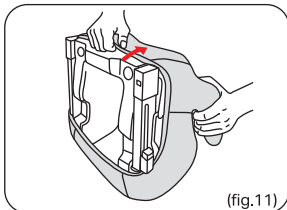
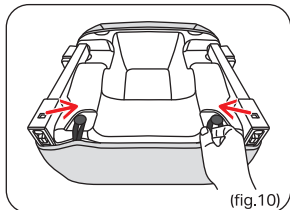
7.2.5 Ensure that the seat belt straps are not twisted. Remove the excess slack from both the lap and diagonal belts by pulling them tight.

7.2.6 Once the seatbelt is guided and located correctly, clip the vehicles seatbelt into the buckle until you hear it click.

## 8. Remove cover

8.1 Take the two elastic straps from plastic buttons. (fig.10)

8.2 Starting at the rear of the seat, grip the fabric cover and pull it off the seat. (fig.11)



## 9. Cleaning the cover

Hand wash the cover in cold or warm water. Do not use detergent that contains chlorine bleach. Do not wash in a washing machine, dehydration machine and dryer. Excessive rubbing will damage the surface and sponge layer.



#### **OUR QUALITY GUARANTEE**

This item is covered by our two-year Quality Guarantee. In the unlikely event that it develops a fault within this period, we will replace it. For more details and full conditions, see [halfords.com/guarantees](http://halfords.com/guarantees) or ask in-store.

#### **CONTACT US**

**UK:** Halfords Ltd, B98 0DE  
[www.halfords.com](http://www.halfords.com)

**ROI:** Halfords c/o DWF, Dublin 1  
[www.halfords.ie](http://www.halfords.ie)

**Item Code: 289539**



**FSC**  
[www.fsc.org](http://www.fsc.org)

**MIX**

**Paper | Supporting  
responsible forestry**

**FSC® C169490**