

# halfords

SINCE 1892

## Topi R129 Child Seat

Child height: 76-150cm

Approx: 15 months to 12 years\*

**2 YEAR**  
GUARANTEE

## User Instructions



Do not use this or any other forward facing child seat for any child under 15 months old.

Item Code: 819366

\* Age shown is a guideline only

# Contents

<b>1. Product Introduction</b> .....	01
1.1 Vehicle application .....	01
1.2 Product introduction .....	02
1.3 Vehicles 3 point seat belt.....	03
<b>2. 2. Using the car seat</b> .....	03
2.1 Seat assembly .....	03
2.2 Use of seat cushions .....	04
2.2.1 Removal of the seat cushion .....	05
2.2.2 Seat cushion installation .....	05
2.3 Seat fixing and removal .....	06
2.4 Use of 5-point seat belts .....	08
2.4.1 Unlock the 5-point safety buckle .....	08
2.4.2 Adjusting the 5-point seat belt .....	08
2.4.3 Closing the 5-point seat belt .....	09
2.4.4 Tighten the 5-point seat belt .....	09
2.4.5 Removing 5-point seat belts .....	10
2.5 Adjustable head and shoulder straps .....	11
<b>3. How to install the safety seat</b> .....	13
3.1 Installation method for 76-105cm .....	13
3.2 Installation method for 100-150cm .....	14
3.2.1 Install with ISOFIX+ 3-point seat belt .....	14
3.2.2 Install with 3-point seat belt without ISOFIX.....	15
<b>4. Maintenance of the child seat</b> .....	15
4.1 Removal of the cover .....	15
4.2 Install the seat cover .....	15
4.3 Cleaning the cloth cover .....	16

## SAFETY WARNINGS

Thank you for purchasing our child seat. Please ensure you fully read and follow the instructions provided. Please retain the instructions for future use. If you have any further questions please contact your local store.



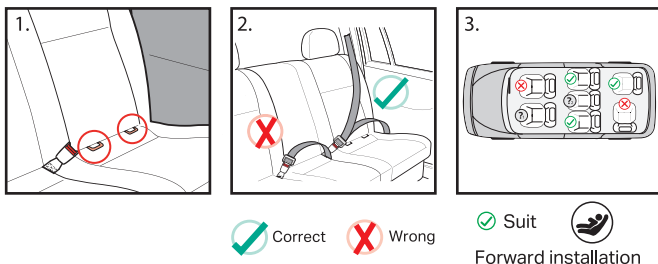
- Before using, please read the instruction manual carefully. The product is a safety product and is only safe when used in accordance with the instruction manual.
- Compliant with ECE R129/03.
- Do not use a child seat if the vehicle seat is equipped with an active front air bag. This can be dangerous. This does not apply to side airbags.
- It is important that the seat belt is correctly routed.
- Never make unauthorized modifications and changes to the product.
- Never use the child car seat if it has been in an accident, or if it has become badly worn.
- Do not leave your children in the seat unattended at any time.
- In hot weather the plastic and metal parts of the product may become hot. You should cover the seat when not in use, especially when it is parked in the sun.
- Ensure that all luggage and objects likely to cause injury in the event of an accident are properly secured.
- Never use the child car seat without the cover. Only covers approved by the manufacturer can be used.
- The seat must be secured with a seat belt or ISOFIX and Top Tether, even when not in use. An unsecured seat may injure other passengers in an accident.
- Store this child car seat in a safe place when it is not being used. Avoid placing heavy objects on it.
- Most accidents occur on short trips. Do not be tempted to avoid using the seat simply because you are not travelling very far.
- Keep the plastic bag away from your child as it could cause suffocation.
- Do not expose the child seat to any corrosive substances. Use a wet towel to clean the plastic body of the child seat.
- Make sure the child car seat belt is adjusted to a suitable position and ensure the belt is not twisted.

- Please ensure the lap belt is worn low down across the pelvis.
- Do not use this product second hand as you may never know its history.
- The rigid items and plastic parts of a child restraint must be located and installed so that they are not liable, during everyday use of the vehicle, to become trapped by a movable seat or in a door of the vehicle.
- Ensure that the seat is not damaged by heavy luggage, movable seats or slamming the car door etc.
- The harness pads and cushion inserts are an important part of the harness system in this child seat. Ensure they are present and used according to this instruction manual.
- This product is only suitable if the vehicle is fitted with 3-point retractor safety belts, approved to UN/ECE Regulation N0.16 or other equivalent standards.
- The correct fitting of the ISOFIX and Top Tether anchoring systems or 3 point belt is of vital importance for the safety of your child.



# 1. Product introduction

## 1.1 The types of approved seat and seat belts required to use this child seat.



1. Cars and seats equipped with ISOFIX connectors. Always check your vehicle's handbook to identify suitable ISOFIX positions.

2. This car seat is suitable for conventional use in all cars equipped with 3 point seat belts that are approved to UN/ECE Regulation NO.16 or other equivalent standards.

**Important:** The child seat must only be installed using a lap and diagonal seat belt.

3. Child seat should only be used in positions shown, Always check your vehicle's handbook to identify suitable ISOFIX positions. Positions with a question mark can only be used in correct circumstances see below:

**Warning:** (?) Do not use this child seat in a passenger seat equipped with active airbags.

(?) Only suitable for use fitted with approved 3 point safety belts.

## TYPES OF TOP TETHER FIXING LOCATION



TYPE 1

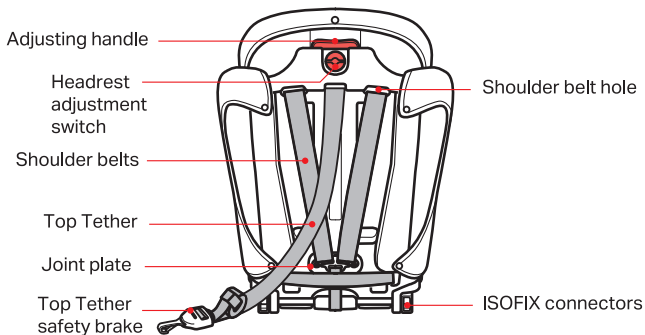
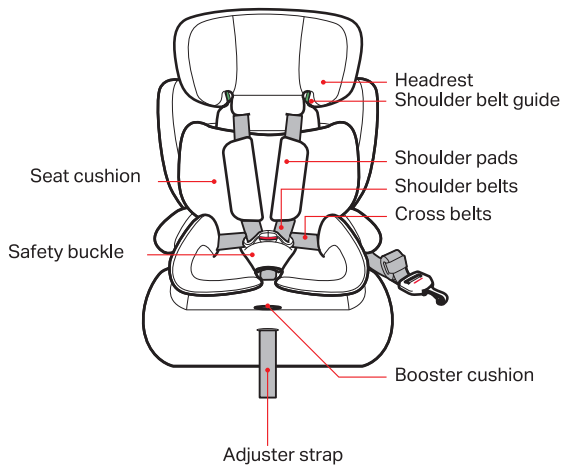


TYPE 2

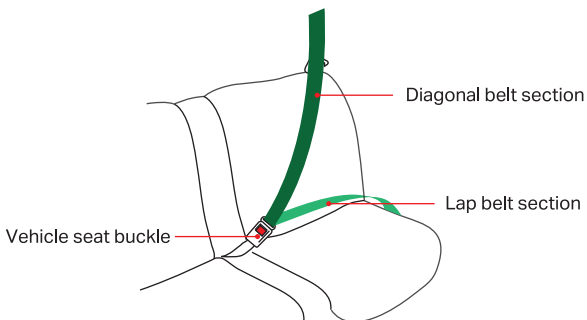


TYPE 3

## 1.2 Product Introduction



## 1.3 Vehicles 3 point seat belt



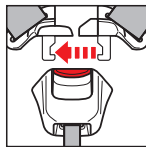
## 2. Using the car seat

### 2.1 Seat assembly

Fig. 1



Fig. 2



1. Hook the backrest into the base and pull it forward until it is secured into an upright position as Fig. 1.
2. Combine the two buckle pieces together as shown as Fig. 2.

Fig. 3

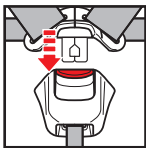
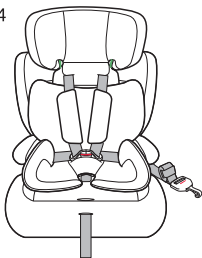


Fig. 4

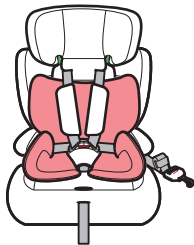


3. Insert the buckle ends into the buckle as shown in Fig. 3.

4. Assembled seat Fig. 4.

## 2.2 Use of seat cushions

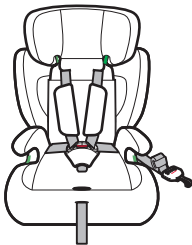
Please use the seat insert cushion attached to this car seat when your child's height is less than 87cm. When your child's height is greater than 87cm the inner cushion should be removed. The seat insert cushion is used to provide extra comfort and support to very small children or babies.



Height: 76cm-87cm

Approx. 15 months up to 2 years

Use a 5-point seat belt  
(With a seat insert cushion)



Height: 87cm-105cm

Approx. 2 up to 4 years

Use a 5-point seat belt  
(Without a seat insert cushion)



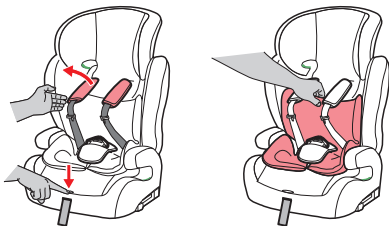
Height: 100cm-150cm

Approx. 4 up to 12 years

Use the 3-point seat belt in the vehicle or ISOFIX + 3-point seat belt

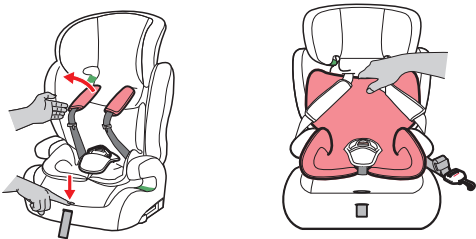
## 2.2.1 Removal of the seat cushion

1. Unlock the 5-point safety buckle.
2. To loosen the harness straps, with one hand, press the harness adjustment button and with the other hand, pull the harness straps forward.
3. Pull out the seat cushion.



## 2.2.2 Seat cushion installation

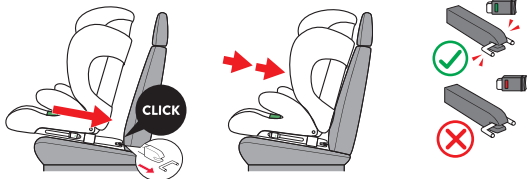
1. Unlock the 5-point safety buckle.
2. To loosen the harness straps, with one hand, press the harness adjustment button and with the other hand, pull the harness straps forward.
3. Pull the seat belt and shoulder pads through the armrests on both sides. Apply the seat cushion to the seat, and ensure that the seat belt buckle is on top of the seat cushion.
4. Put the seat belt and shoulder pads back on the inside of the seat cushion. Close the five-point seat belt.



## 2.3 Seat fixing and removal

These are generic instructions for fitting the child seat when using the various securing mechanisms. Please follow the specific instructions for securing the seat dependant upon which fixing you are using the seat for.

### Fitting the seat to ISOFIX points

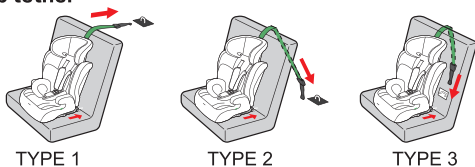


Using one hand, grasp the ISOFIX release handle and with the other hand, pull out the ISOFIX connecting arm. You will need to do this separately for each ISOFIX securing arm.

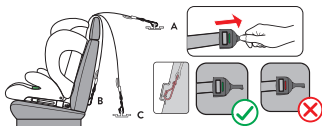
Push the ISOFIX connectors directly into the anchorages on both sides until an audible 'click' is heard on both sides. After this the green indicators should be seen.

There are various adjustment positions for the ISOFIX arms, always ensure both sides are set to the same positions. Push the child seat back until it contacts the vehicle seat back. If the seat moves or the arms pull from the ISOFIX points, repeat the above steps and install again.

## Using top tether



Identify where the top tether fixing location is in your specific vehicle.



- Pull out the top tether and press the tether strap release button to extend the strap until it is long enough to hook on to the top tether anchorage point behind the vehicle seat back.
- Hook the top tether strap onto the anchorage point. There may be more than one top tether anchorage point. Please select the appropriate one.
- Pull the end of the top tether strap to tighten.
- Once the strap is fully tight, the indicator on the top tether will turn from red to green. Once hooked on, keep tightening the strap until the tether turns to green.

## Uninstalling the seat from ISOFIX points



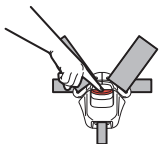
Uninstalling the child car seat is as per the diagrams shown. With one hand, push the child car seat towards the vehicle seat back. With the other hand pull the ISOFIX release handle to extend the ISOFIX arms. Depress the unlock buttons to disengage the seat from the ISOFIX anchorage points.

Note. You will need to do this for each ISOFIX arm individually. The indicators should now show as red. Pull the child car seat away from the vehicle seat back.

Once you have removed the seat from the car, with one hand, grasp the ISOFIX release handle and with the other hand, push the arm back towards the child seat. You will need to do this for both sides individually.

## 2.4 Use of 5-point seat belts

### 2.4.1 Unlock the 5-point safety buckle

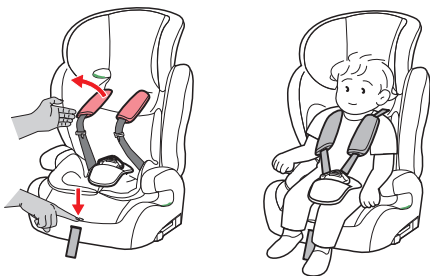


Press the red button down to unlock.  
(as shown on the left)

---

### 2.4.2 Adjusting the 5-point seat belt

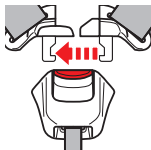
1. Unlock the 5-point safety buckle.
2. To loosen the harness straps, with one hand press the harness adjustment button and with the other hand, pull the harness straps forward.
3. Put the seat belt and shoulder pads through the armrests on both sides.
4. Place your child in the child seat. Adjust the headrest according to your child's height. With the headrest adjustment switch in the horizontal position, squeeze and pull/push the handle behind the headrest upwards or downwards to the desired position. Make sure the headrest is locked in position. You will hear it click when it is locked into a position.





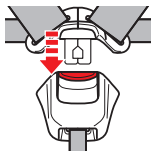
## 2.4.3 Closing the 5-point seat belt

Fig. 5



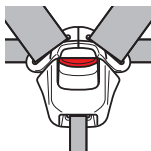
Combine the two buckle pieces together as shown in Fig. 5.

Fig. 6



Insert the buckle ends into the buckle as shown in Fig. 6.

Fig. 7



A "click" sound is heard to indicate the installation is in place.

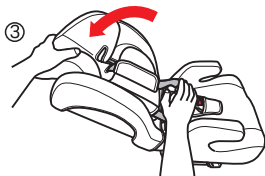
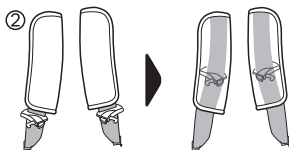
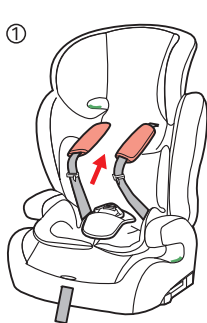
## 2.4.4 Tightening the 5-point seat belt

Place the shoulder straps onto your child and secure the buckle pieces into the buckle. You will hear an audible click when the buckle is secure. To tighten the harness straps, pull the harness adjuster strap at the base of the seat until the straps are sitting close to your child's chest. Please ensure you do not over tighten.

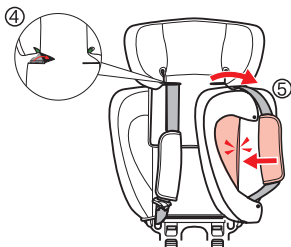
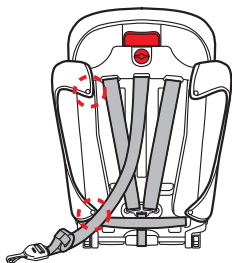


## 2.4.5 Removing the 5-point seat belts

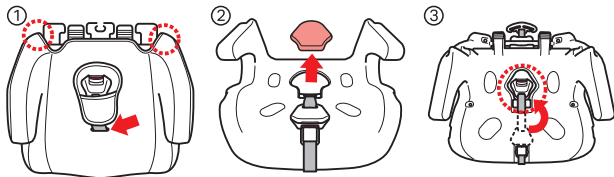
1. Loosen the 5-point safety belt and hide the two buckle pieces inside the shoulder pad. ① ②
2. To separate the base and backrest. With one hand press the base and with the other hand, push down the backrest. ③



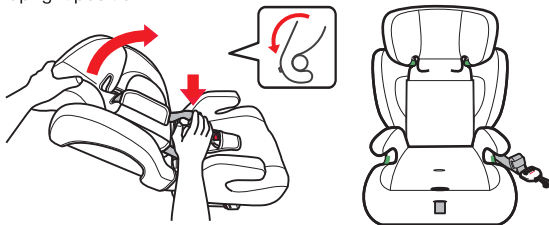
3. To remove the shoulder belt, open the hook and loop on the shoulder belts. ④
4. Unfasten the two fasteners on the side of the backrest, put the shoulder pads into the side bags. Hide both sides of the shoulder straps. Fasten the snap buttons. ⑤



5. Unfasten the two snap buttons at the bottom of the base, take out the EPE in the hole of the base. Pass the 5-point safety buckle together with pad through the cover of the base. Put the buckle and pad in the hole. Fasten the snap buttons.



6. Hook the backrest into the base. Push it and secure into an upright position.



## 2.5 Adjustable head and shoulder straps

In order to adjust the headrest height there is an adjustment handle on the back of the headrest. Squeeze and pull the handle up to lift the headrest up, or squeeze and push the handle down to lower the headrest.

**⚠ Please ensure that the headrest is locked in position after adjustment, you will hear it click.**

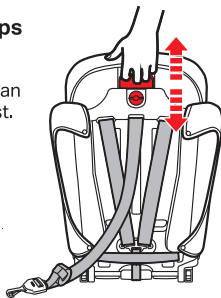


Fig. 8

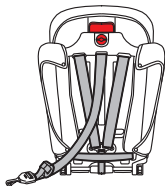
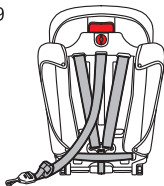
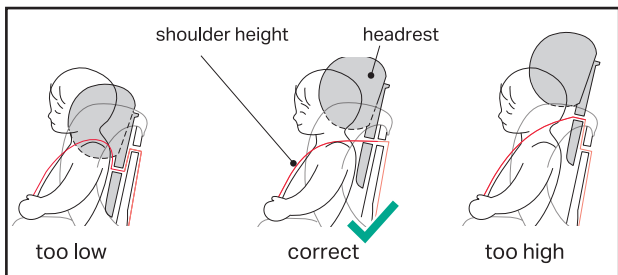


Fig. 9



For a child's height of between 76-105cm the headrest adjustment switch needs to be in the horizontal position when adjusting the headrest. This is shown above.

For a child's height of between 100-150cm. The headrest adjustment switch needs to be in the vertical position when adjusting the headrest. This is shown above.




**IMPORTANT:** Please make sure the shoulder strap positions are a little higher than the child's shoulder height.

The headrest can be adjusted in 13 positions, please make sure the child's head is positioned in the middle of the headrest. The top shoulder strap positions need to be a little higher than shoulder height before using the baby car seat. This will provide effective protection in case of a collision.

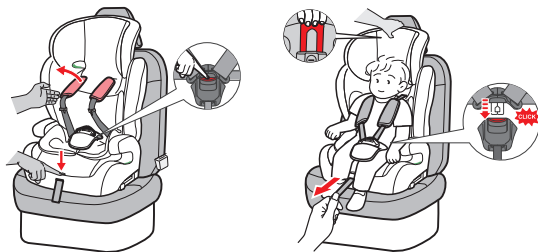
## 3. How to install the safety seat

### 3.1 Installation method for 76-105cm

-  A child with a height of 76-87cm must use the seat insert cushion. Children over 87cm must not use the seat insert cushion.


1. For a child with a height of 76-105cm, the safety seat must be installed with ISOFIX and a TOP Tether. Please refer to 2.3 Seat fixing and removal.

Fig. 10



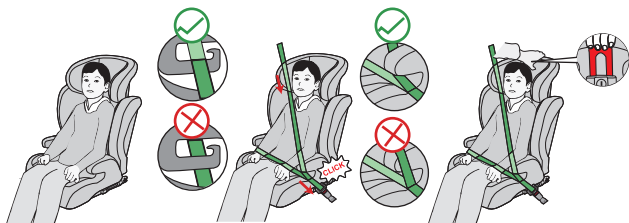
2. To loosen the harness straps, with one hand press the harness adjustment button and with the other hand, pull the harness straps forward.
3. Place your child in the child seat. Adjust the headrest height according to your child. With the headrest adjustment switch in the horizontal position, squeeze and pull/push the handle behind the headrest upwards or downwards to the desired position. Make sure the headrest is locked into position. You will hear a click when it locks into place. Place the shoulder straps onto your child and secure the buckle pieces into the buckle, you will hear an audible click when its secure. To tighten the harness straps, pull the harness adjuster strap at the base of the seat until the straps are sitting close to your child's chest. Please ensure you do not over tighten. As shown in Fig. 10.

## 3.2 Installation method for 100-150cm

-  You will need to remove the 5 point safety harness.  
To remove the 5 point safety harness, please refer to 2.4.5 removing 5-point seat belts.

### 3.2.1 Installing with ISOFIX + 3-point seat belt

1. The headrest adjustment button needs to be in the vertical position as shown in Fig. 9. To install the seat with ISOFIX please refer to 2.3 Seat fixing and removal.



2. Place your child in the seat. Adjust the headrest by squeezing and pulling the headrest handle up into the desired position. Take the adult seat belt, feed the diagonal belt through the shoulder belt guide as shown. Pull the belt across the child as shown and then take both the diagonal and lap belts and pull under the armrest. Insert the belt end into the buckle until you hear an audible click. Make sure the car seat belt is not twisted.

### 3.2.2 Installing with 3-point seat belt but WITHOUT ISOFIX

1. The headrest adjustment button needs to be in the vertical position as shown in Fig. 9.



2. Place your child in the seat. Adjust the headrest by squeezing and pulling the headrest handle up into the desired position. Take the adult seat belt, feed the diagonal belt through the shoulder belt guide as shown. Pull the belt across the child as shown and then take both the diagonal and lap belts and pull under the armrest. Insert the belt end into the buckle until you hear an audible click. Make sure the car seat belt is not twisted.

---

## 4. Maintenance of the child seat

### 4.1 Removal of the cover

Unfasten the four snaps on the back and the base, and pull out to remove. Pull out the tension of the head installation guide groove, and pull the cloth cover upwards to remove.

### 4.2 Install the seat cover

To reattach the cover, reverse the above steps.

### 4.3 Cleaning cloth cover

The cover and plastic parts of the child seat can be cleaned with a wet cloth using a mild detergent and warm water. Ensure no soap gets into the buckle or adjusters. Do not use chemical cleaners or bleach on any part of the car seat. Dry thoroughly before use.



#### WARNING



This is an i-Size car seat enhanced child restraint system. It is approved according to UN Regulation No.129/03, for use primarily in "i-Size seating positions" as indicated by vehicle manufacturers in the vehicle user's manual. If in doubt, consult either the enhanced child restraint system manufacturer or the retailer.

#### OUR QUALITY GUARANTEE

This item is covered by our two-year Quality Guarantee. In the unlikely event that it develops a fault within this period, we will replace it. For more details and full conditions, see [halfords.com/guarantees](http://halfords.com/guarantees) or ask in-store.

#### CONTACT US

**UK:** Halfords Ltd, B98 0DE  
[www.halfords.com](http://www.halfords.com)

**ROI:** Halfords c/o DWF, Dublin 1  
[www.halfords.ie](http://www.halfords.ie)

**Item Code: 819366**